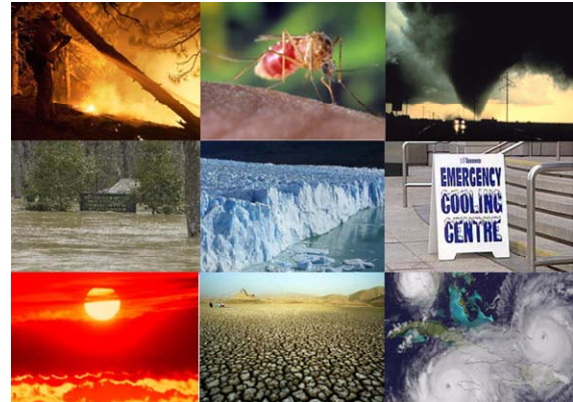




## Climate Change: What's the Impact on Public Health?

The theme of National Public Health Week, April 7 – 13, is climate change and health. World Health Day, April 7, is also focused on Climate Change.

As the climate changes, there may be more extreme weather events such as floods, extreme heat and storms. These can cause health problems and damage to our environment.



### Why is the climate changing?

When we use fossil fuels such as oil, gasoline and coal, we may contribute to the global warming that is causing climate change. During National Public Health Week, let's take action to fight climate change! There are simple steps that you and your family can take every day. Read and sign the Healthy Climate Pledge. You can join the thousands of other people who have already vowed to start fighting climate change today!

### The Healthy Climate Pledge:

I/We, the undersigned, pledge to make small changes in our daily lives during **National Public Health Week 2008** as a first step toward improving the health of the climate, our communities, our families and ourselves.

In doing so, I/we acknowledge that it is now indisputable that there is a direct connection between climate change and health, that the scientific community has stated decisively that human beings are responsible for climate change and that the impacts of climate change will worsen as emissions continue to rise.

As individuals who care about ourselves, our families and our planet, I/we accept responsibility for how our lifestyles have contributed to climate change and vow to be part of the solution. We will work to learn more about how what happens in our home, community and workplace has global impact.

This week, I/we begin a life-long commitment to a healthy climate and a healthy future. I/We pledge to:

**Be Prepared.** Learn about the impact of climate change on your health and issues that affect your region and community. Take steps to prepare for possible disasters. To learn how, visit <http://www.ready.gov/>

**Travel Differently.** Leave the car at home one day, and take public transit instead. Walk or bike. If you need to drive, carpool. If you can, telecommute.

**Eat Differently.** Buy food from a community farmer's market that doesn't travel across the country to get to your supermarket shelves. Eat more vegetables and less meat.

**Green Your Work.** Use recycled paper if you don't already. Even if you do, print less often and on both sides of the paper. Set your computer to energy-saver mode and buy eco-friendly office furniture.

**Green Your Home.** Insulate your home so that energy isn't literally going out the window. Reduce your use of wasteful products. Reuse or recycle the products you do use and use less water. The pledge is also on the internet at:  
<http://www.nphw.org/nphw08/pledge.cfm?fuseaction=default>

### Where can I learn more about climate change?

- **The National Public Health Week site:** <http://www.nphw.org/nphw08/default.htm>  
This site lists the risks of climate change to your community and the effects that it may have on your and your family's health. It also has tips you can follow to fight climate change.
- **The World Health Day site:** <http://www.who.int/world-health-day/en/>  
This site talks about the impacts of climate change on people's health throughout the world.
- **The Environmental Protection Agency's (EPA) climate change site:** <http://www.epa.gov/climatechange/>  
This site has many climate change resources, including: what you can do to help, policies on climate change, and frequent questions.



**YALE CENTER FOR  
PUBLIC HEALTH PREPAREDNESS**

2 Church Street South, Suite 314  
New Haven, CT 06519  
Phone: 203-764-9713  
E-mail: [cphp@yale.edu](mailto:cphp@yale.edu)

<http://publichealth.yale.edu/ycphp>  
<http://blogs.yale.edu/roller/page/prepare>

This publication is funded through CDC Cooperative Agreement #U90/CCU124251-02. Its contents are the sole responsibility of the authors and do not necessarily reflect the views of the CDC.

**Mission:** As part of a national network of Centers for Public Health Preparedness that are funded by the Centers for Disease Control and Prevention (CDC), the Yale Center for Public Health Preparedness, based at the Yale School of Public Health, works to ensure that frontline public health workers are prepared to respond to public health emergencies including natural disasters, acts of terrorism, and disease outbreaks.

*The purpose of this newsletter is to provide preparedness information to public health professionals. If you have suggestions for future newsletter topics or to comment on preparedness issues, please e-mail us at [cphp@yale.edu](mailto:cphp@yale.edu)  
To subscribe to this newsletter, please send an email to [cphp@yale.edu](mailto:cphp@yale.edu) with "public health" in the subject line.*